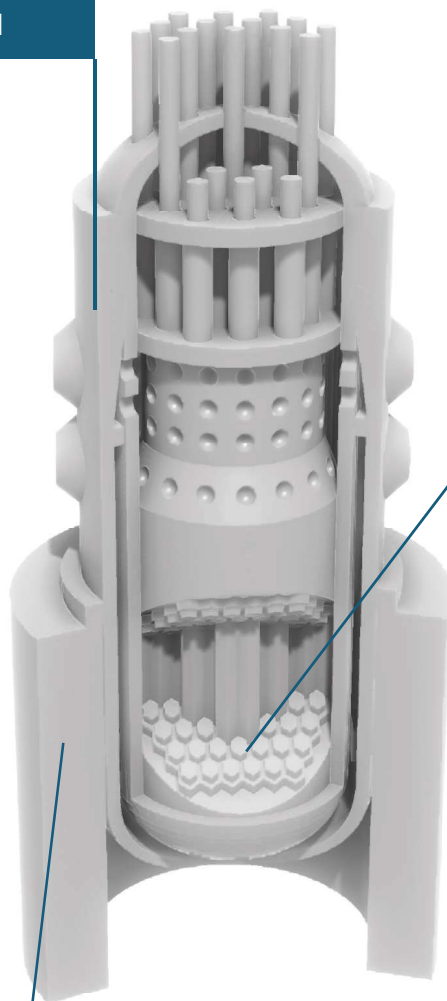


JADERNÁ ELEKTRÁRNA

NÁVOD NA SLOŽENÍ

JADERNÝ REAKTOR

TLAKOVÁ NÁDOBA Z NÍZKOLEGOVANÉ
CHROM-NIKL-MOLYBDEN-VANADOVÉ
OCELI S VNITŘNÍM NÁVAREM
Z AUSTENITICKÉ NEREZOVÉ OCELI



AKTIVNÍ ZÓNA REAKTORU

BETONOVÉ ULOŽENÍ REAKTORU

POČET ČÁSTÍ

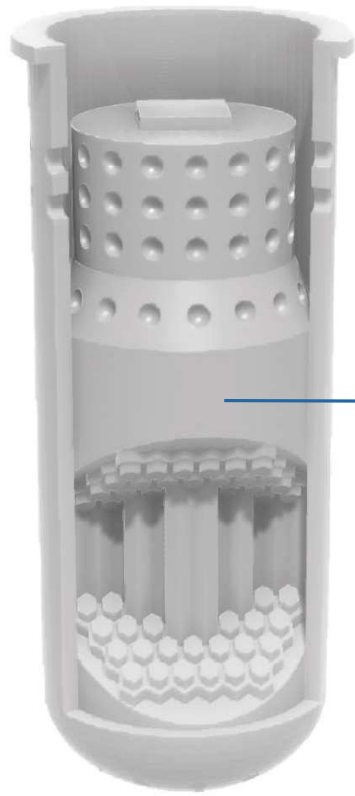
6

DOBA TISKU

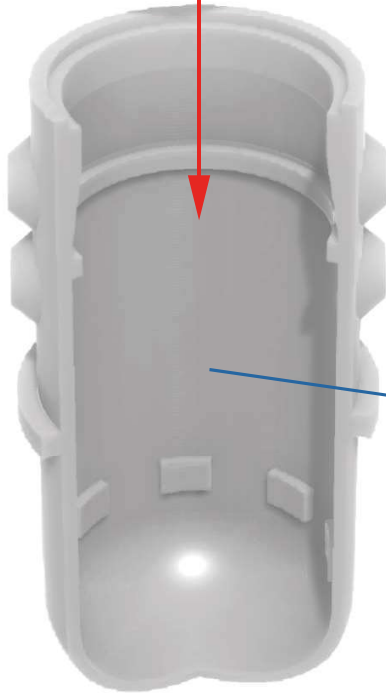
12.5 HODIN

SPOTŘEBOVANÝ MATERIÁL

106 GRAMŮ



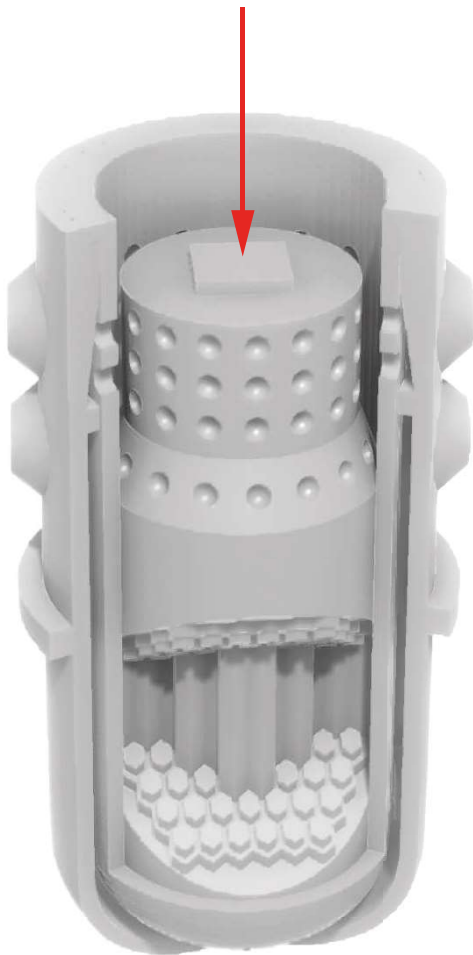
02



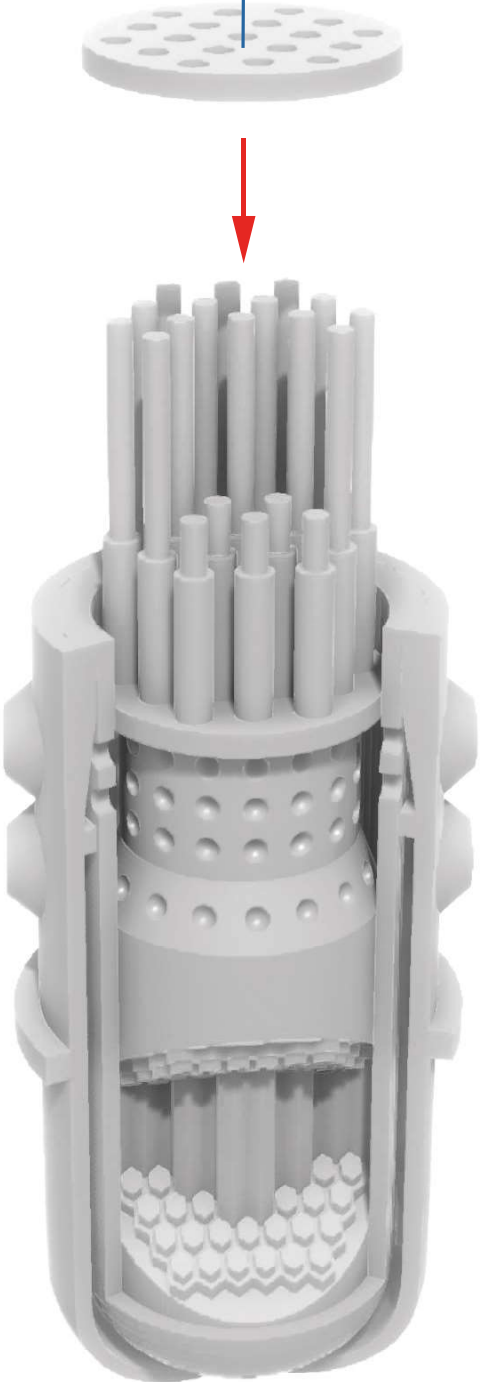
01



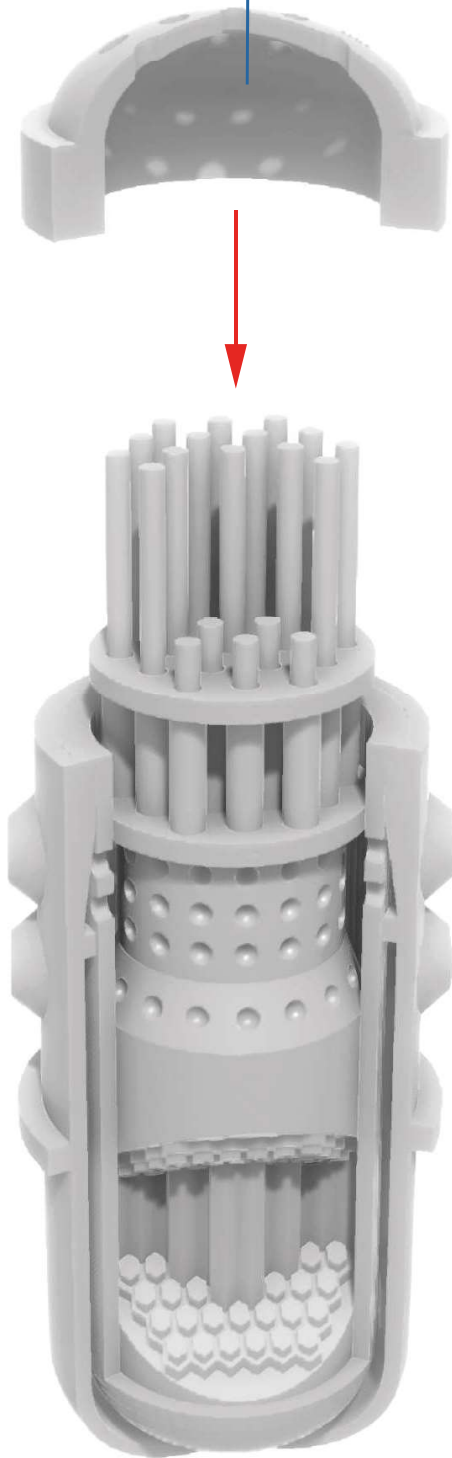
03

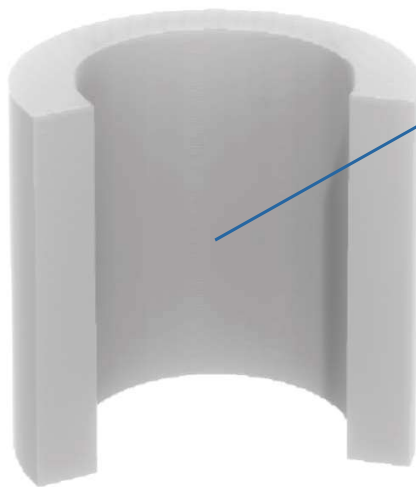
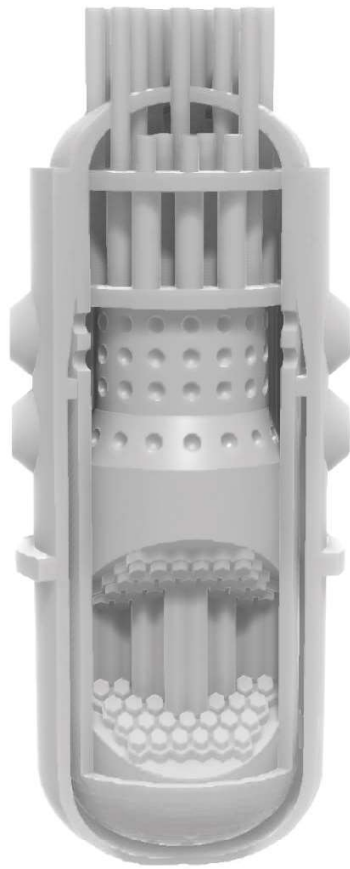


04



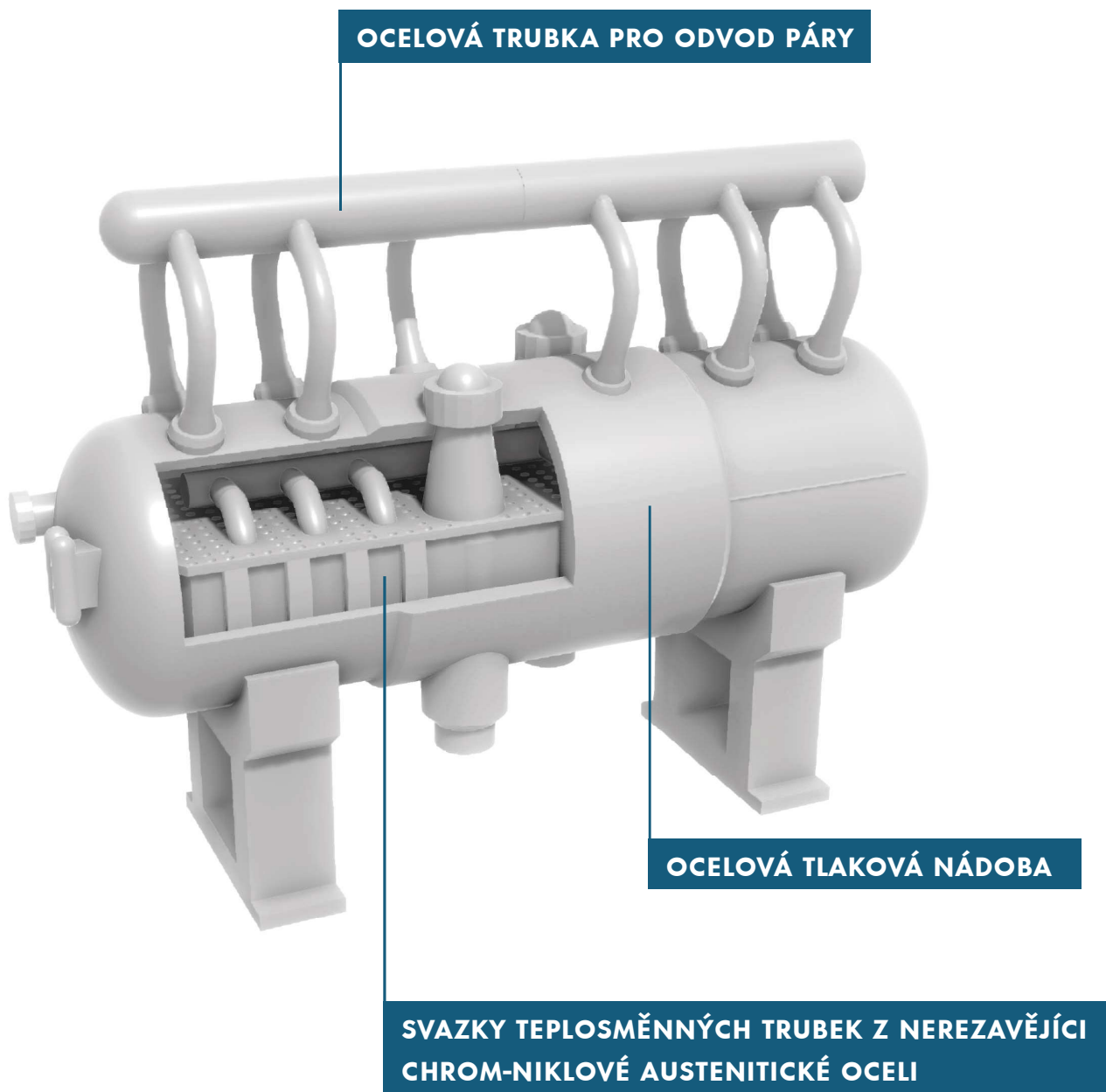
05





06

PAROGENERÁTOR



POČET ČÁSTÍ

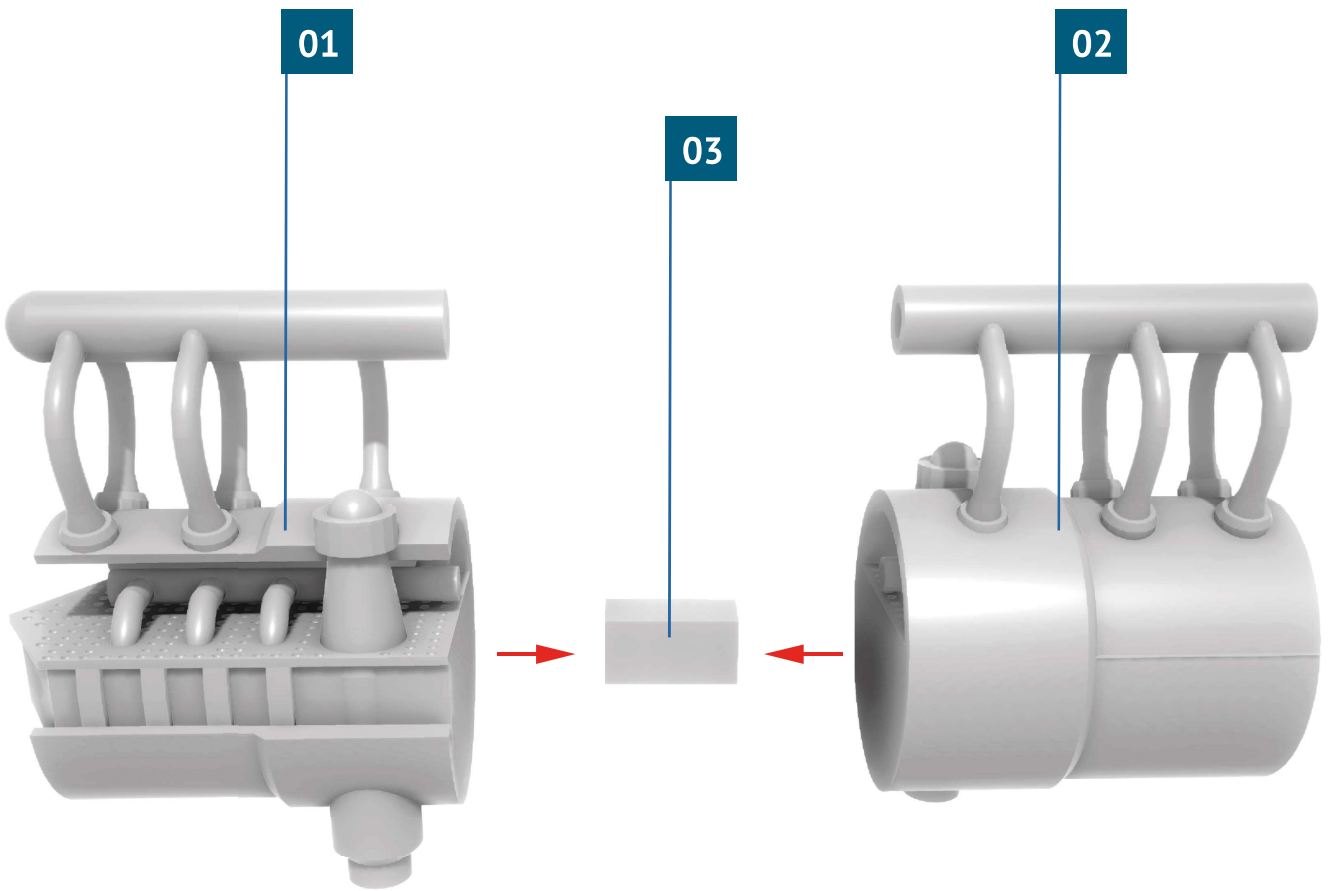
7

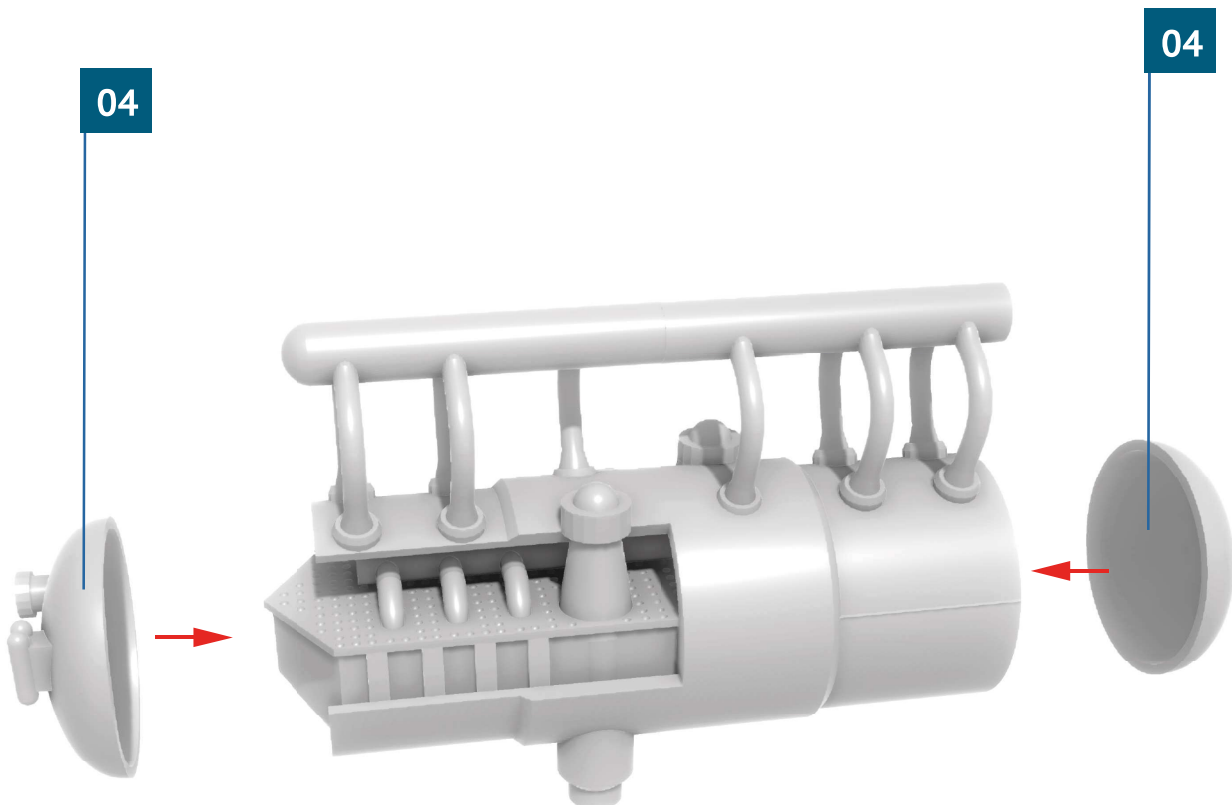
DOBA TISKU

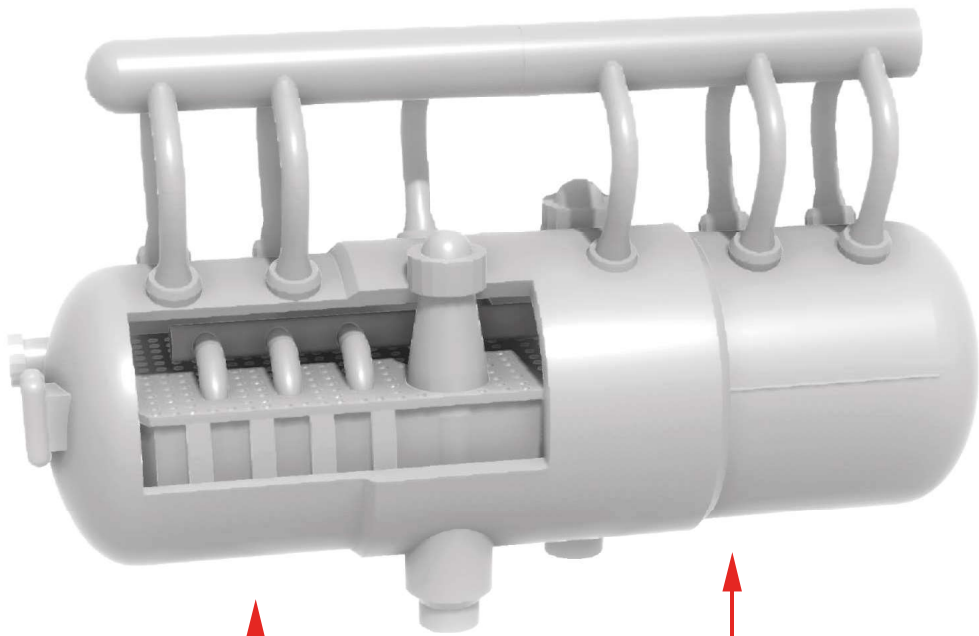
12 HODIN

SPOTŘEBOVANÝ MATERIÁL

99 GRAMŮ



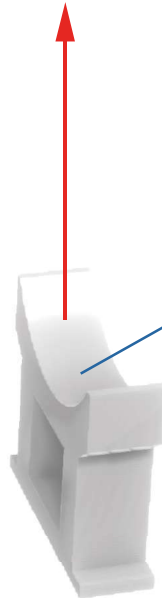




05



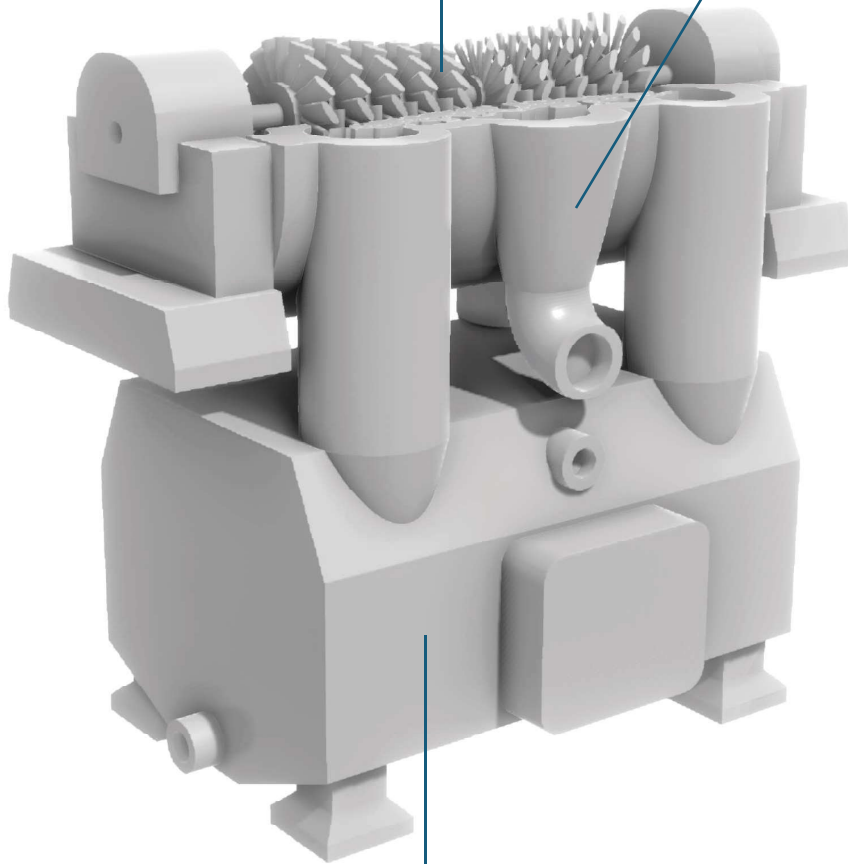
05



TURBÍNA A KONDENZÁTOR

OCELOVÉ NEBO TITANOVÉ LOPATKY

OCELOVÁ TLAKOVÁ NÁDOBA



KONDENZÁTOR SE SYSTÉMEM
TITANOVÝCH CHLADICÍCH TRUBEK

POČET ČÁSTÍ

5

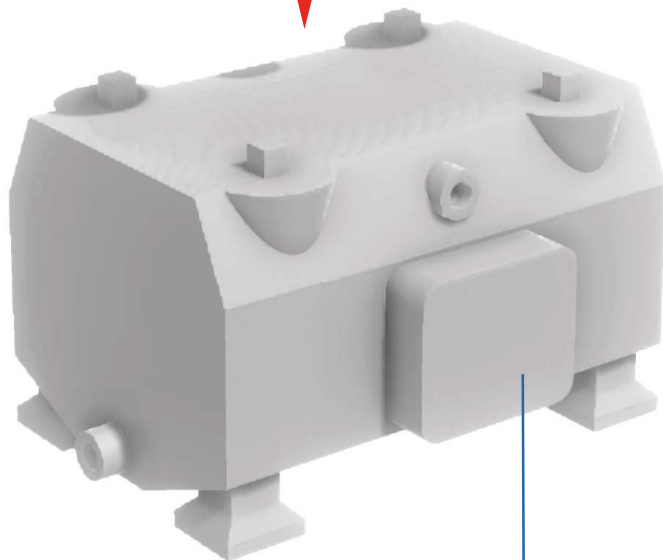
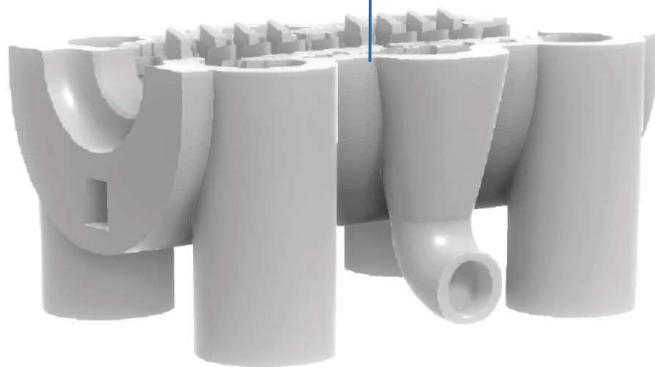
DOBA TISKU

19.5 HODIN

SPOTŘEBOVANÝ MATERIÁL

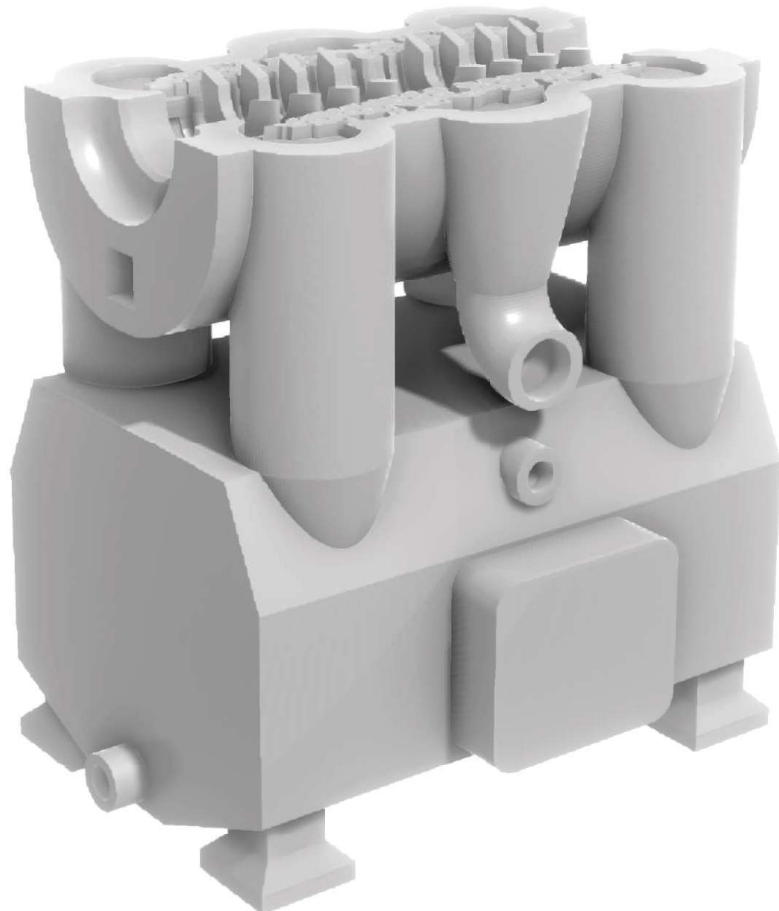
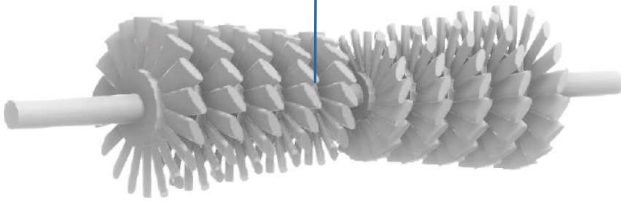
193 GRAMŮ

01

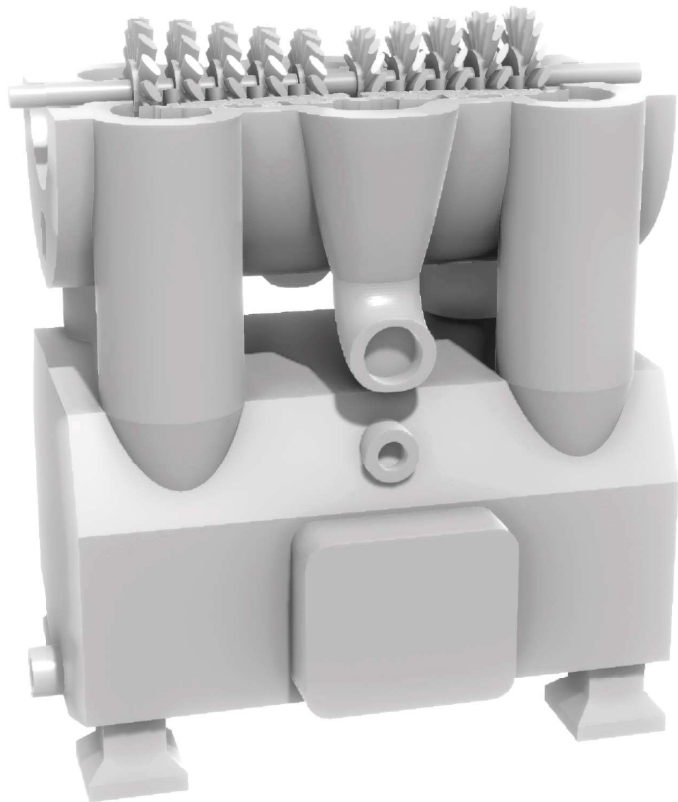


01

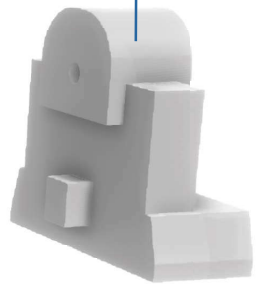
03



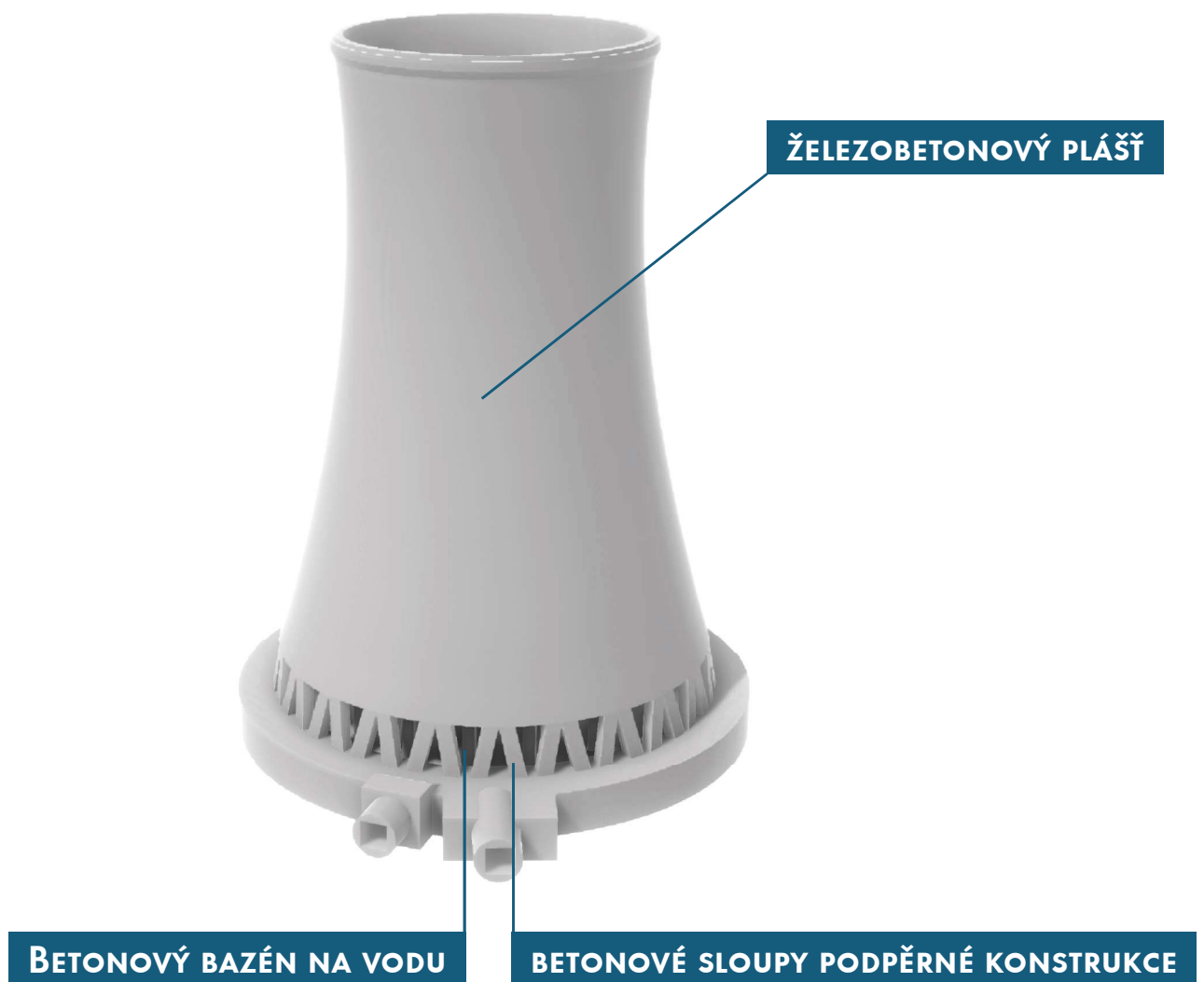
04



04



CHLADICÍ VĚŽ



POČET ČÁSTÍ

3

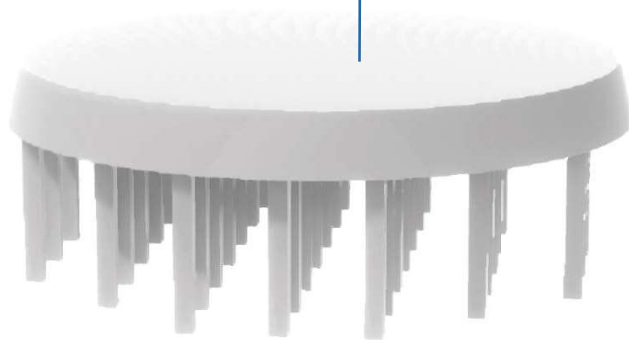
DOBA TISKU

12 HODIN

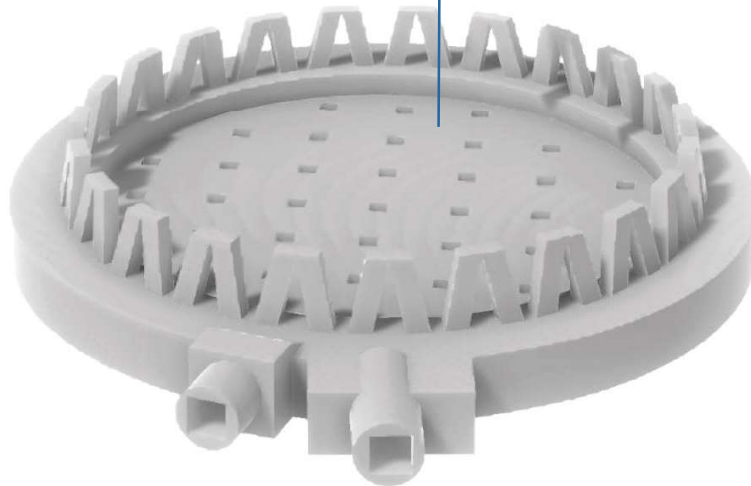
SPOTŘEBOVANÝ MATERIÁL

128 GRAMŮ

02



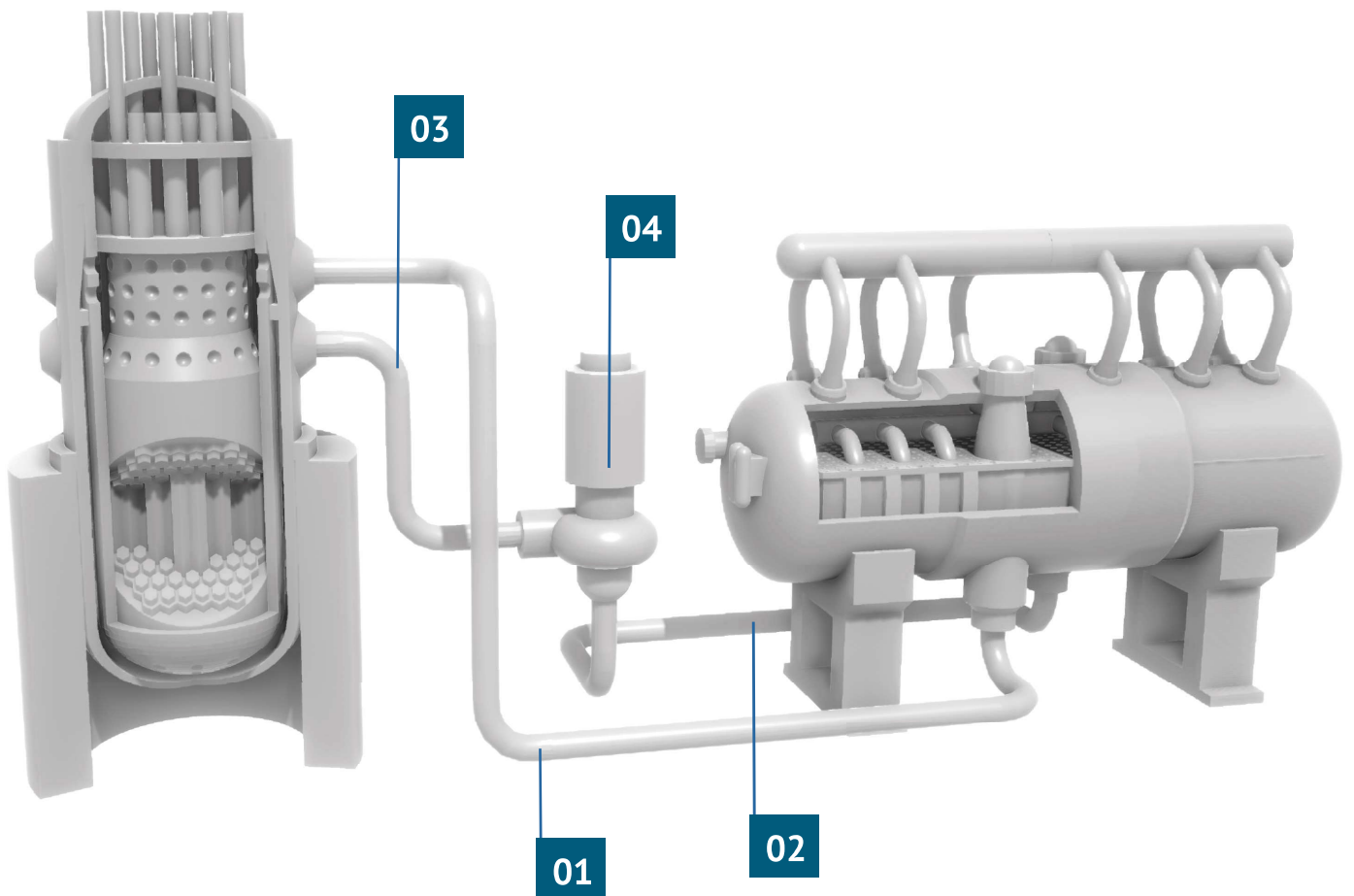
01



03



PRIMÁRNÍ OKRUH



POČET ČÁSTÍ

4

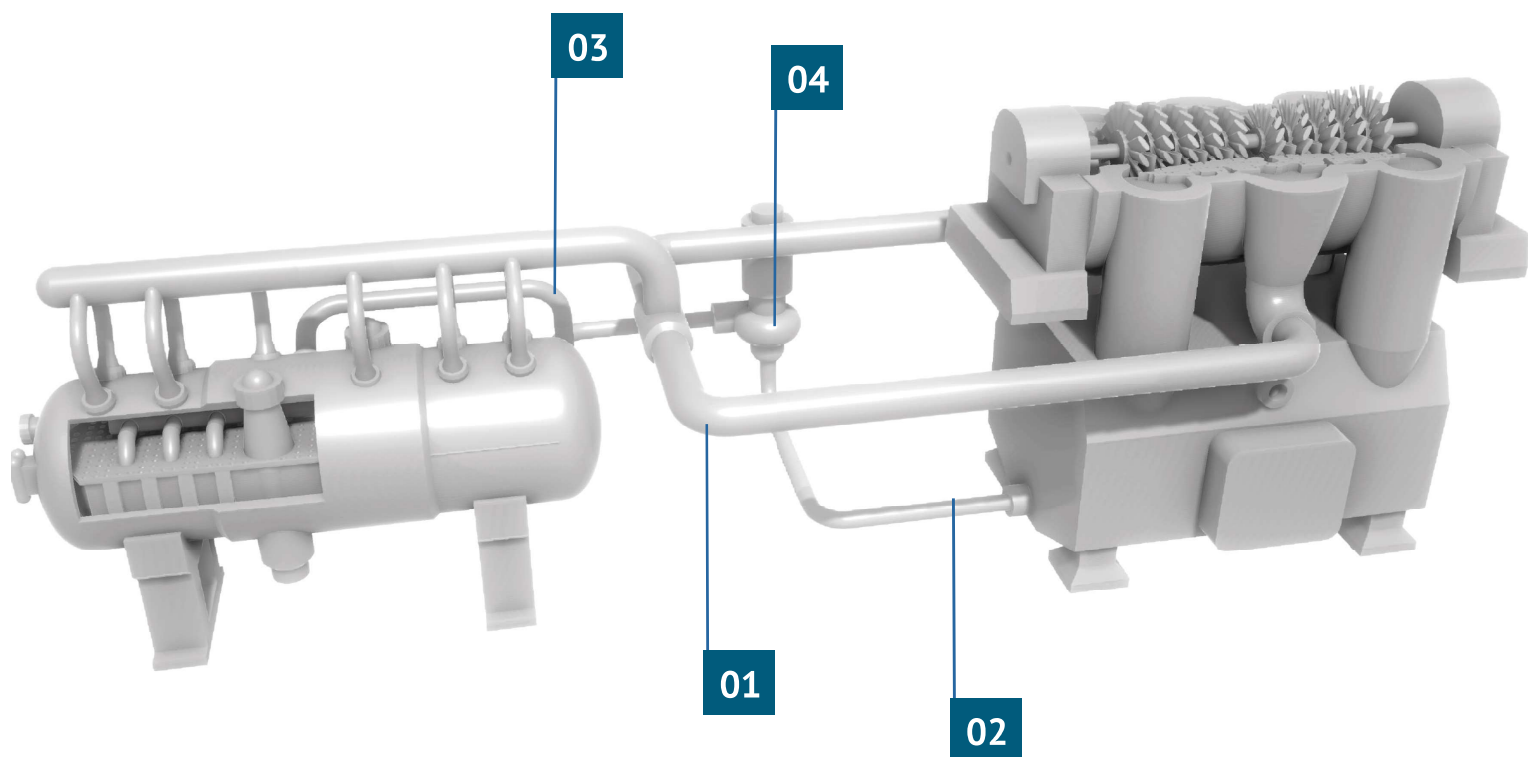
DOBA TISKU

2.75 HODIN

SPOTŘEBOVANÝ MATERIÁL

19 GRAMŮ

SEKUNDÁRNÍ OKRUH



POČET ČÁSTÍ

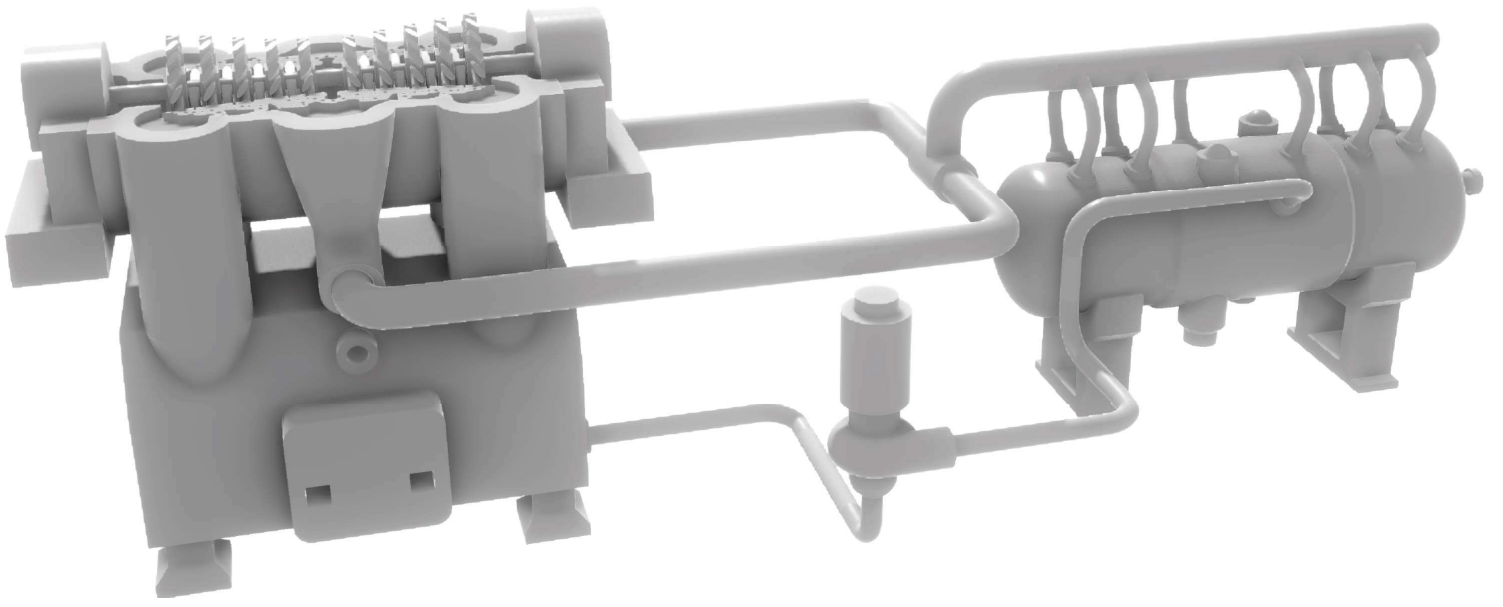
4

DOBA TISKU

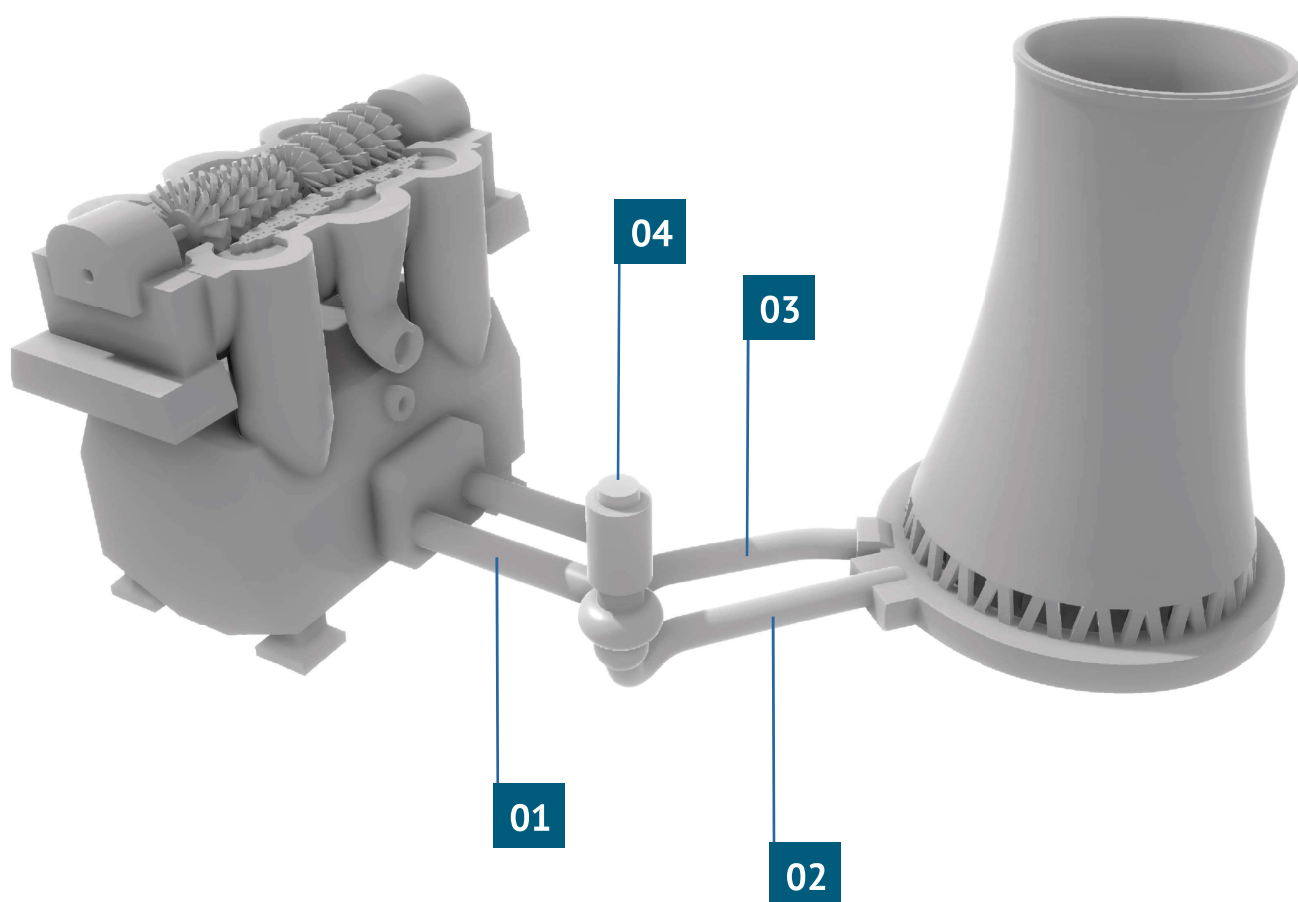
5.25 HODIN

SPOTŘEBOVANÝ MATERIÁL

41 GRAMŮ



TERCIÁLNÍ OKRUH



POČET ČÁSTÍ

4

DOBA TISKU

3 HODIN

SPOTŘEBOVANÝ MATERIÁL

21 GRAMŮ